

# Intuitive & Smart Solution

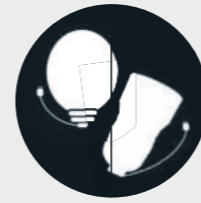


## About Duo<sup>®</sup>

Ackermann Duo<sup>®</sup> is the intuitive and convenient 2-in-1 solution that combines a Full HD camera control unit and a powerful LED lightsource.

It is engineered for both, consulting and operating room for multi-disciplinary use - taking the first step between consultation and the surgical act. Created with cutting edge technology and futuristic design, this unit, due to this compact size and elegant design, takes less than 1 m<sup>2</sup> floor space with a trolley.

**2in1 Cam & LED**



# ACKERMANN DUO

## FULL HD Camera System & LED Lightsource

**KEY FEATURES**

- ✓ Full HD **Exmor™** CMOS sensor camera technology
- ✓ LED lightsource 180W Xenon equivalent
- ✓ 3 programmable buttons on camera head

### TECHNICAL SPECIFICATIONS

#### CAMERA CONTROL UNIT & LED LIGHTSOURCE

- ✓ Automatic white balance
- ✓ Video Outputs → 1 HDMI; 1 HD-SDI/3G-SDI; 1 USB 3.0 micro B
- ✓ Recommended USB stick format → FAT32
- ✓ Electronic iris shutter
- ✓ Compatible with Ackermann, Storz® and Olympus® light cables
- ✓ LED lightsource technology equivalent to 180 Watts Xenon
- ✓ Manual adjustment of the light intensity
- ✓ Anti-blinding feature with light cable detection
- ✓ Automatic thermal protection system
- ✓ LED lifetime up to 50.000 hours
- ✓ Colour temperature → 5.000 K
- ✓ Brightness, details, red and blue gains, color adjustments
- ✓ Gain → Off / Low / High
- ✓ On-screen displayed adjustments
- ✓ "SAVE" function to memorize the settings
- ✓ "RESET" function to restore to the factory settings
- ✓ Digital zoom up to 2.5x
- ✓ Full HD Images recorder integrated (USB) / Format .tiff
- ✓ Touchscreen with intuitive interface
- ✓ 17 languages
- ✓ Dimensions (W x H x D) → 260 x 100 x 215 mm
- ✓ Weight → 1.9 kg
- ✓ Protection type → IPX0 (not drip-proof)
- ✓ Power supply → 100 - 240 VAC / 50 - 60 Hz
- ✓ Power consumption → 85-95 VA
- ✓ 2x T 1,6 A - 250 V fuses (Marked UL/CSA only)
- ✓ Continuous service

#### CAMERA HEAD

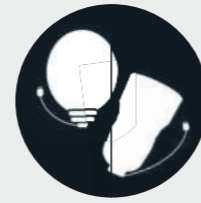
- ✓ 1x CMOS Exmor RTM technology 1/2" Full HD sensor
- ✓ 3 programmable buttons
- ✓ Automatic electronic shutter (1/50 to 1/100.000)
- ✓ Resolution → 1920 x 1080 pixels
- ✓ Definition → 1080 lines
- ✓ Active pixel area → 1920 x 1080
- ✓ Cable length → 2,99 m
- ✓ Dimensions (D x H) → 130 x 47 mm
- ✓ Weight (camera head only) → 152 g
- ✓ Protection type → IPX7 (waterproof)

#### COUPLER

- ✓ 24 mm HD coupler
- ✓ C-mount, scope holder with locking mechanism
- ✓ Weight → 87g
- ✓ Protection type → IPX7 (waterproof)

ITEM # 16-2009





# ACKERMANN DUO Full Flexibility

**3**  
PROGRAMMABLE  
BUTTONS

COMPACT  
**2IN1**  
UNIT

**INTUITIVE**  
NAVIGATION

IDEAL FOR  
**DAILY**  
PRACTICE

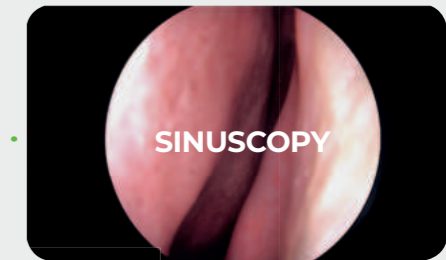
BEFORE:  
**PRE**  
OPERATIVE

DURING:  
**INTRA**  
OPERATIVE

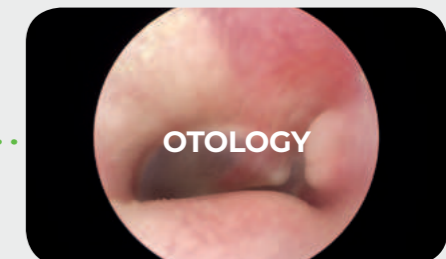
AFTER:  
**POST**  
OPERATIVE



LAPAROSCOPY



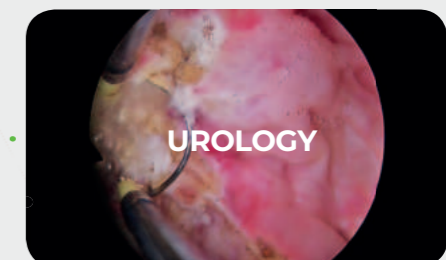
SINUSCOPY



OTOLOGY



HYSTEROSCOPY



UROLOGY

CAN BE USED FOR  
**VARIOUS**  
APPLICATIONS

**50.000h**  
LED LIFE-TIME

**1920x1080p**  
HIGH-QUALITY IMAGE

INTEGRATED  
**USB-REC**





[www.ackermanninstrumente.de](http://www.ackermanninstrumente.de)