

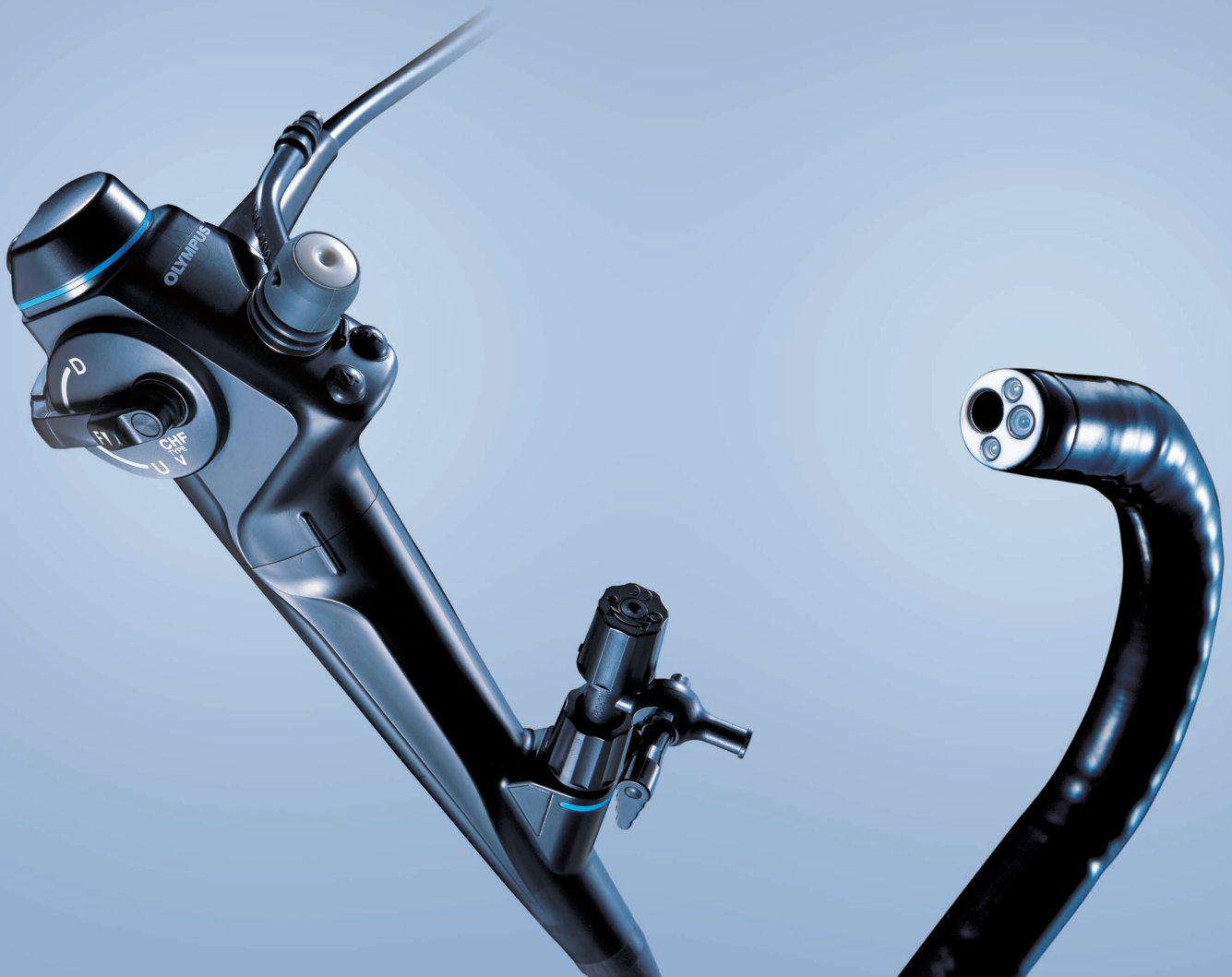
OLYMPUS[®]

Your Vision, Our Future

CHOLEDOCHO-VIDEOSCOPE

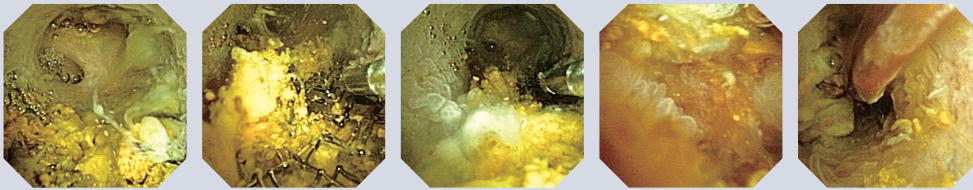
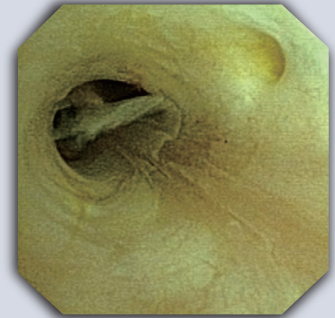
CHF-V

Visualize Precision — Olympus Brings It Closer



CCD-on-the-tip for brilliantly visualized images

- A simultaneous-multicolor type CCD that features color consistent moiré-free imaging is introduced to the visualization of the bile duct.
- With its deep depth of field of view, this system eliminates the need for inconvenient intra-operative focusing.
- The CHF-V's image is even larger and less distorted than that of our conventional fiberscope*, making the most of its high-resolution image quality and enhancing observation.



*The OES choledochofiberscope CHF-P60.



Specifications

Optical System	Field of View	120°
	Direction of View	Forward viewing
	Depth of Field	3 - 50 mm
Distal End	Outer Diameter	4.9 mm
	Bending Section	Up 160° / Down 130°
Insertion Tube	Outer Diameter	5.2 mm
	Length	Working Length 380 mm Total Length 660 mm
Biopsy Forceps	Minimum Visible Distance	3 mm from distal end
Instrument Channel	Inner Diameter	2.0 mm

Standard Set

• Choledocho-Videolescope CHF TYPE V	1
• MAJ-891 Forceps/Irrigation Plug	1
• MB-156 ETO cap	1
• MAJ-1077 Suction Cleaning Adapter	1
• MAJ-579 Biopsy Valve 10 pcs	1
• MH-507 Channel-Opening Cleaning Brush	1
• BW-15B Channel Cleaning Brush	1
• MAJ-207 Suction Valve 10 pcs *1	1
• MAJ-209 Single-use Suction Valve 20 pcs *1	1

*1 These products may not be available in some areas.

Compatible Video Systems



EVIS EXERA III System

VISERA ELITE Surgical Imaging System



VISERA Pro Video System

VISERA Video System

Accessories

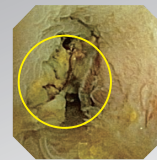
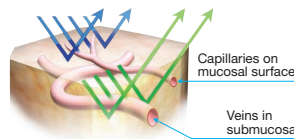
BIOPSY FORCEPS			ROTATABLE BIOPSY FORCEPS	GRASPING FORCEPS		WASHING PIPE	
Fenestrated FB-19SX-1	Fenestrated with needle FB-34C-1	Fenestrated FB-21SX-1	Fenestrated FB-19CR-1	Rubber tips (non-latex) FG-20P-1	Fenestrated FG-24SX-1	Sharp tooth FG-53SX-1	Back flushing PW-7SX-1

• Some of these products may not be available in some areas. For further information, contact Olympus.

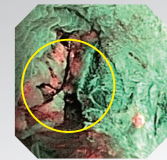


Narrow Band Imaging for a more discerning view

Available in combination with EVIS EXERA III (CV-190 + CLV-190) or VISERA ELITE (OTV-S190 + CLV-S190) or VISERA Pro (OTV-S7Pro + CLV-S40Pro).



Conventional image



NBI image

Specifications, design and accessories are subject to change without any notice or obligation on the part of the manufacturer.